



More than 1/3
of all schools
reported
increasing the
number of
adults
providing
NPSS student
supports in
the 2022-23
school year.

Increasing School Capacity to Meet Students' Needs

Findings from the 2022-23 National Partnership
for Student Success Principal Survey

A comprehensive post-pandemic representative survey of public school principals fielded by the RAND Corporation in spring 2023 shows that the nation's schools are working hard to provide students with the people-powered supports they need to thrive in the wake of the pandemic.

A September 2023 report from the Johns Hopkins Everyone Graduates Center estimates that **an additional 187,000 adults provided tutoring, mentoring, college and career advising, or wraparound supports in public schools during the 2022-23 school year**, when compared to the 2021-22 school year. This represents significant progress toward the Biden-Harris Administration's goal of recruiting an additional 250,000 into high-impact student support roles by summer 2025.



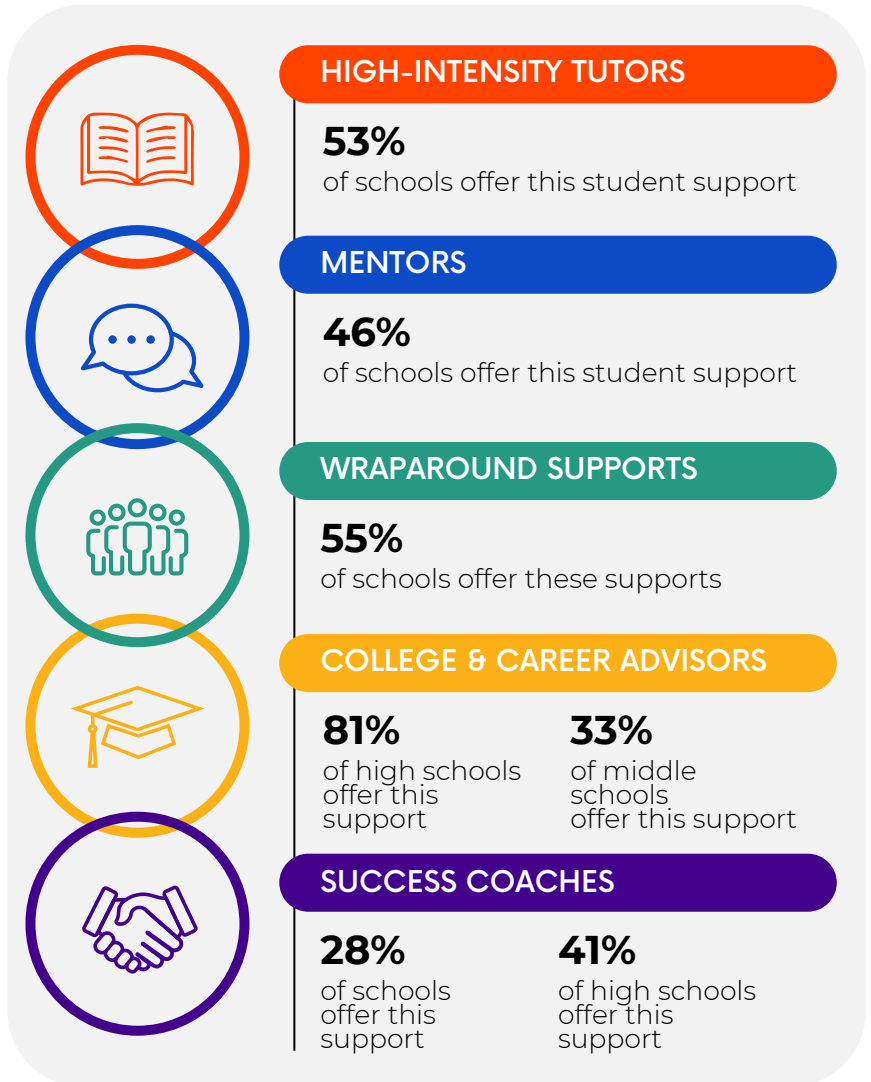
SURVEY FINDINGS

+ 187,000 Adults

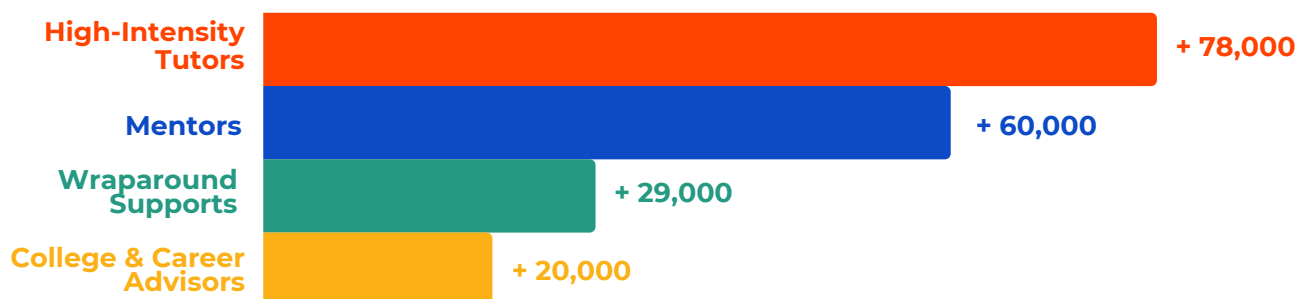
Goal: 250,000

Taken together, the collective efforts of the nation's schools to increase their capacity to meet their students' needs resulted in an estimated **additional 187,000 adults** providing evidence-based, relationship-driven student supports in 2022-23.

In no small feat, tens of thousands of schools significantly increased their capacity to provide high-intensity tutoring, mentoring, college/career advising, or wraparound supports in a single school year, by adding staff or partnering with student support providers. The recruitment, scheduling, and coordination work involved in providing these types of supports is substantial and schools faced many post-pandemic challenges and competing priorities.



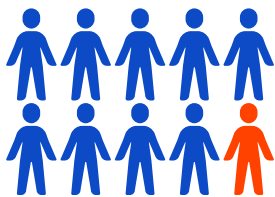
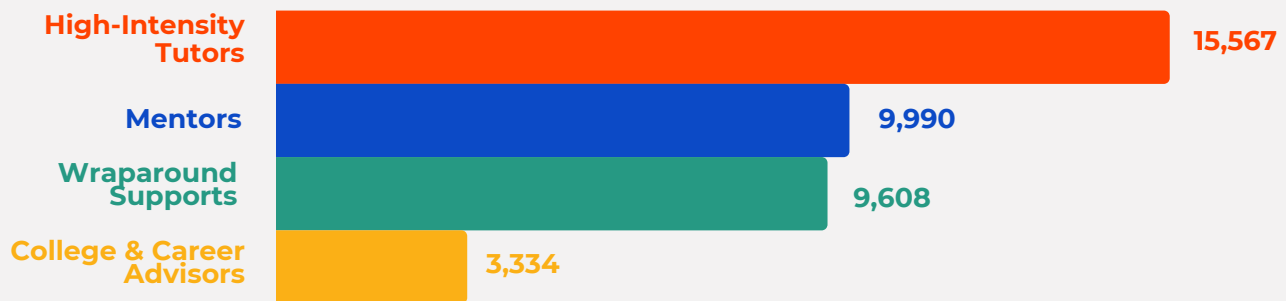
Estimated Number of Additional Adults Providing NPSS Student Supports in 2022-23 when compared to 2021-22 (rounded to the nearest 1,000)



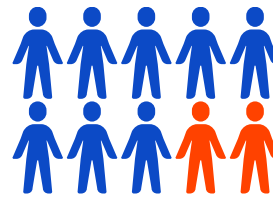
ADDITIONAL FINDINGS

Nearly all surveyed principals reported providing at least one of the evidence-based student supports identified by the National Partnership for Student Success (NPSS) as critical to supporting students holistically—high-intensity tutoring, mentoring, success coaching, college and career advising, and wraparound supports—during the 2022-23 school year.

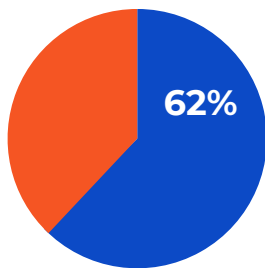
Estimated Number of Schools with more Adults Providing Supports in 2022-23



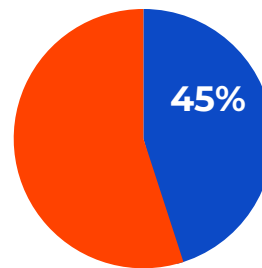
87% of principals reported providing **at least one of the NPSS student supports** during the 2022-23 school year.



76% of principals reported providing **sustained supports** to at least some students from adults providing **high-intensity tutoring, mentoring, or success coaching.**



62% of schools where the majority of students received free or reduced-price lunch (FRL) reported offering **high-intensity tutoring** to students.



45% of schools where only a minority of students received FRL reported offering **high-intensity tutoring** to students.

THERE'S STILL MORE TO DO:

While progress has been made, there is still work to do. Help the nation meet the President's goal of an additional 250,000 people in NPSS roles and beyond.



of schools reported having no tutors, mentors, or success coaches.



1 in 5

high schools reported not having these supports



1 in 4

elementary schools reported not having these supports



1 in 3

middle schools reported not having these supports

✔ **Sign up to join** the National Partnership for Student Success

✔ **Request no cost technical assistance** from the NPSS Support Hub to implement, expand, or improve high-impact student supports in your community.

✔ **Contribute to the President's goal** of an additional 250,000 people in NPSS roles by summer 2025 by sharing about the growth of your services.



REFERENCES

RAND American Educator Panels, "LEARN Network School Leader Survey (SRI); American School Leader Panel", data file, RAND Corporation, Santa Monica, CA July 06, 2023.

Balfanz, R. & Byrnes, V. (2023). *Increasing school capacity to meet students' post-pandemic needs: Findings from the 2022-23 National Partnership for Student Success Principal Survey*, Everyone Graduates Center, Johns Hopkins School of Education. *

The National Partnership for Student Success is a public-private partnership between the U.S. Department of Education, AmeriCorps, and the Everyone Graduates Center at Johns Hopkins University. This brief is a publication of the National Partnership for Student Success Support Hub at the Johns Hopkins Everyone Graduates Center.

* For more in depth analysis, methodology, and limitations see the full report [here](#).

